



SRI SHANMUGHA COLLEGE OF NURSING FOR WOMEN

Approved by Government of Tamilnadu & TNNMC. Approved by Indian Nursing Council, New Delhi
Affiliated to The Tamilnadu Dr. M.G.R Medical University, Chennai

Sankari- Tiruchengode Main Road, Pullipalayam, Morur (Po), Sankari(Tk), Salem (dt), Tamilnadu, Pin- 637304

E-mail : principalsrishanmughacon@gmail.com | info@shanmughanursing.edu.in

www.shanmughanursing.edu.in | Phone : 04283 262925, 261899, 262922



4.4.1. Percentage of classrooms, seminar halls and demonstration rooms linked with internet /Wi-Fi-enabled ICT facilities (data for the preceding academic year)



SRI SHANMUGHA COLLEGE OF NURSING FOR WOMEN

Approved by Government of Tamilnadu & TNNMC, Approved by Indian Nursing Council, New Delhi
Affiliated to The Tamilnadu Dr. M.G.R Medical University, Chennai

Sankari- Tiruchengode Main Road, Pullipalayam, Morur (Po), Sankari(Tk), Salem (dt), Tamilnadu, Pin- 637304

E-mail : principalsri@shanmughacollegeofnursing.com | info@shanmughanursing.edu.in
www.shanmughanursing.edu.in | Phone : 04283 262925, 261899, 262922



TO WHOMSOEVER IT MAY CONCERN

This is to certify that the following classrooms, seminar hall and demonstration rooms linked with internet / Wi-Fi enabled ICT facilities which are available in our institution.

Number of classrooms and seminar halls with LCD only	Number of classrooms and seminar halls with LCD and Wi-Fi / LAN facilities	Number of classrooms and seminar halls with LCD, smart board and Wi-Fi / LAN facilities	Number of classrooms and seminar halls with LCD, smart board, Wi-Fi / LAN, audio video recording facilities and any other mobile technology	Total number of classrooms and seminar halls
5	5	5	5	5

PRINCIPAL

Prof. SHEELAVATHI N., Ph.D
PRINCIPAL

SRI SHANMUGHA COLLEGE OF
NURSING FOR WOMEN
PULLIPALAYAM MORUR P.O 637 304
SANKAGIRI (TK), SALEM, DT) T.N.



SRI SHANMUGHA COLLEGE OF NURSING FOR WOMEN

Approved by Government of Tamilnadu & TNNMC. Approved by Indian Nursing Council, New Delhi
Affiliated to The Tamilnadu Dr. M.G.R Medical University, Chennai

Sankari- Tiruchengode Main Road, Pullipalayam, Morur (Po), Sankari(Tk), Salem (dt), Tamilnadu, Pin- 637304

E-mail : principalsri@shanmughacollegeofnursing.edu.in | info@shanmughanursing.edu.in

www.shanmughanursing.edu.in | Phone : 04283 262925, 261899, 262922

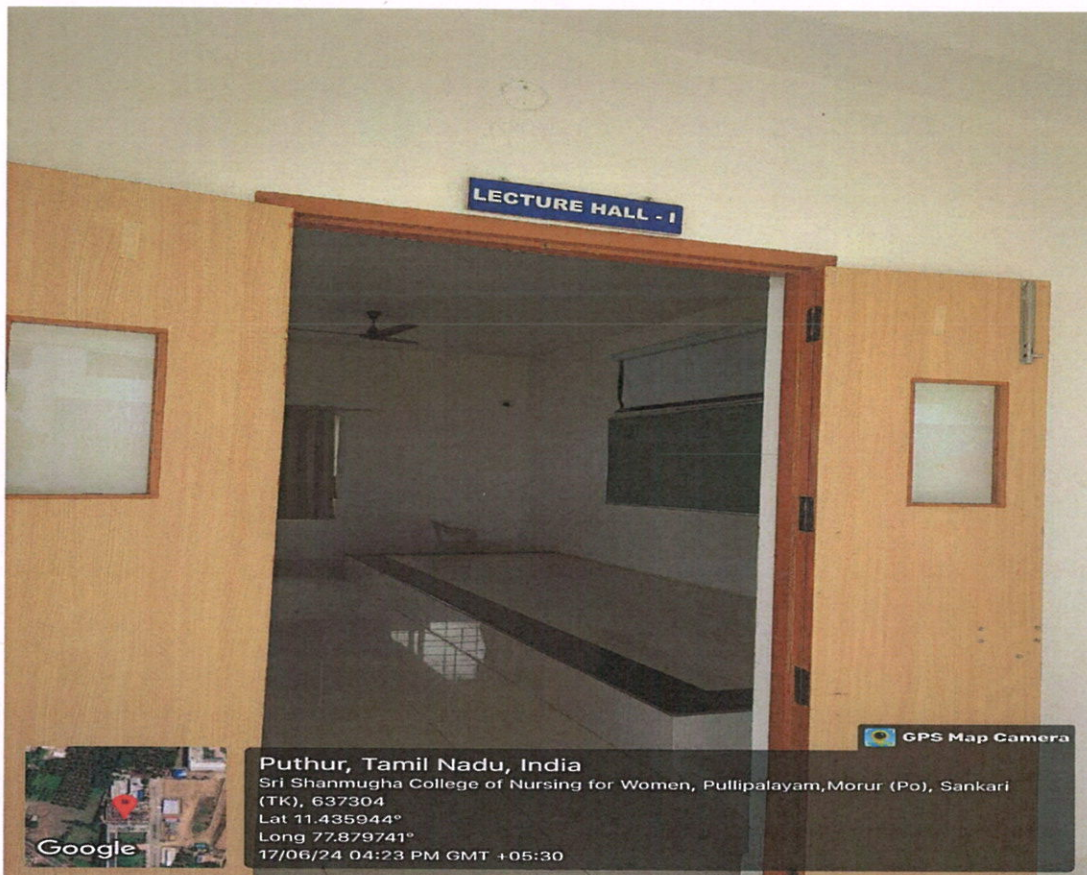


4.1.1 a. List of available teaching-learning facilities such as Classrooms, Laboratories including computing equipment for Teleconference facilities.

List of available teaching-learning facilities in the College

CLASS ROOM PHOTOGRAPHS

CLASS ROOM	YEAR OF STUDY	FACILITY AVAILABLE
LECTURE HALL -1	I YEAR B.Sc NURSING	PROJECTOR , MIC,KEYBOARD,CPU,MOUSE AND SPEAKER-4



LECTURE HALL -1

Smy
Prof. SHEELAVATHI N., Ph.D
PRINCIPAL
SRI SHANMUGHACOLLEGE OF
NURSING FOR WOMEN
PULLIPALAYAM MORUR P.O 637304
SANKAGIRI (TK), SALEM, DT, T.N.

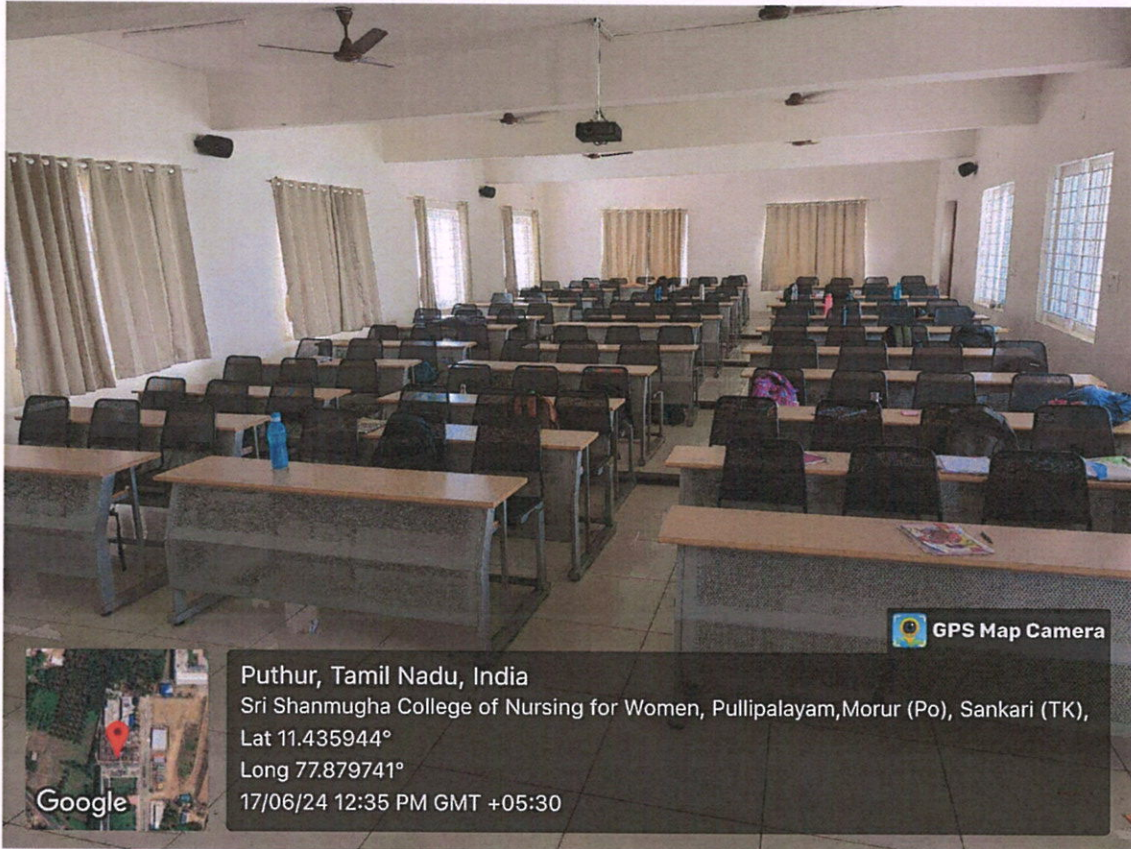


SRI SHANMUGHA COLLEGE OF NURSING FOR WOMEN

Approved by Government of Tamilnadu & TNNMC. Approved by Indian Nursing Council, New Delhi
Affiliated to The Tamilnadu Dr. M.G.R Medical University, Chennai

Sankari- Tiruchengode Main Road, Pullipalayam, Morur (Po), Sankari (Tk), Salem (dt), Tamilnadu, Pin- 637304

E-mail : principalsrihanmughacon@gmail.com | info@shanmughanursing.edu.in
www.shanmughanursing.edu.in | Phone : 04283 262925, 261899, 262922



GPS Map Camera

Puthur, Tamil Nadu, India

Sri Shanmugha College of Nursing for Women, Pullipalayam, Morur (Po), Sankari (TK),

Lat 11.435944°

Long 77.879741°

17/06/24 12:35 PM GMT +05:30

LECTURE HALL -1

Prof. SHEELAVATHI N., Ph.D

PRINCIPAL

SRI SHANMUGHACOLLEGE OF
NURSING FOR WOMEN

PULLIPALAYAM MORUR P.O 637304
SANKAGIRI (TK), SALEM, DT, T.N.



SRI SHANMUGHA COLLEGE OF NURSING FOR WOMEN

Approved by Government of Tamilnadu & TNNMC. Approved by Indian Nursing Council, New Delhi
Affiliated to The Tamilnadu Dr. M.G.R Medical University, Chennai

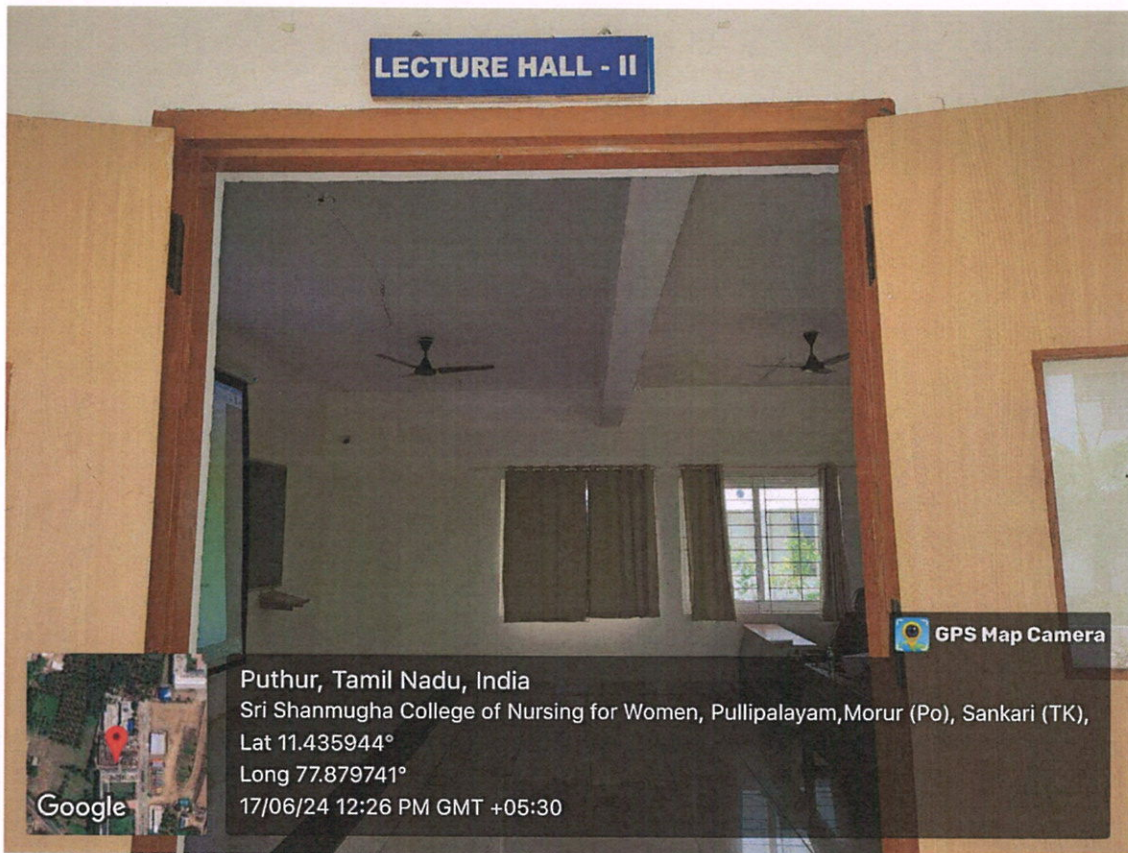
Sankari- Tiruchengode Main Road, Pullipalayam, Morur (Po), Sankari(Tk), Salem (dt), Tamilnadu, Pin- 637304

E-mail : principalsrihanmughacon@gmail.com | info@shanmughanursing.edu.in

www.shanmughanursing.edu.in | Phone : 04283 262925, 261899, 262922



CLASS ROOM	YEAR OF STUDY	FACILITY AVAILABLE
LECTURE HALL -II	II YEAR B.Sc NURSING	PROJECTOR , MIC,KEYBOARD,CPU,MOUSE AND SPEAKER



LECTURE HALL -2

Prof. SHEELAVATHI N., PhD

PRINCIPAL

SRI SHANMUGHACOLLEGE OF
NURSING FOR WOMEN

PULLIPALAYAM MORUR P.O 63 30
SANKAGIRI (TK), SALEM, DT, T.N.



SRI SHANMUGHA COLLEGE OF NURSING FOR WOMEN

Approved by Government of Tamilnadu & TNNMC. Approved by Indian Nursing Council, New Delhi
Affiliated to The Tamilnadu Dr. M.G.R Medical University, Chennai

Sankari- Tiruchengode Main Road, Pullipalayam, Morur (Po), Sankari(Tk), Salem (dt), Tamilnadu. Pin- 637304

E-mail : principalsrihanmughacon@gmail.com | info@shanmughaonursing.edu.in

www.shanmughaonursing.edu.in | Phone : 04283 262925, 261899, 262922



Puthur, Tamil Nadu, India

Sri Shanmugha College of Nursing for Women, Pullipalayam, Morur (Po), Sankari (TK), 637304

Lat 11.435944°

Long 77.879741°

17/06/24 04:22 PM GMT +05:30

LECTURE HALL -2

Prof. **SHEELAVATHI N, PhD**
PRINCIPAL

**SRI SHANMUGHACOLLEGE OF
NURSING FOR WOMEN
PULLIPALAYAM MORUR P.O 637304
SANKAGIRI (TK), SALEM, DT, T.N.**



SRI SHANMUGHA COLLEGE OF NURSING FOR WOMEN

Approved by Government of Tamilnadu & TNNMC. Approved by Indian Nursing Council, New Delhi
Affiliated to The Tamilnadu Dr. M.G.R Medical University, Chennai

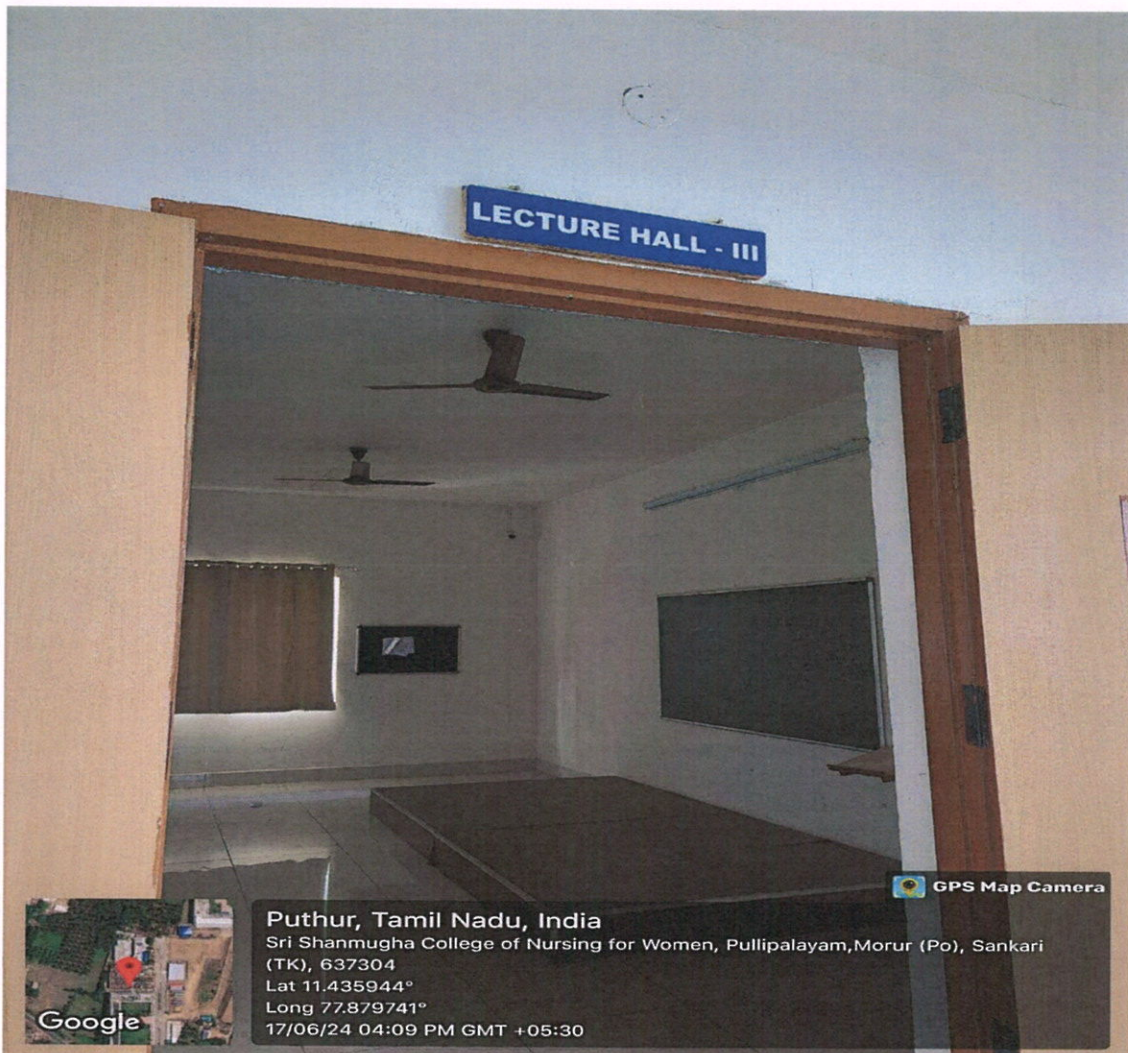
Sankari- Tiruchengode Main Road, Pullipalayam, Morur (Po), Sankari(Tk), Salem (dt), Tamilnadu, Pin- 637304

E-mail : principal@shanmughacollegeofnursing.edu.in | info@shanmughacollegeofnursing.edu.in

www.shanmughacollegeofnursing.edu.in | Phone : 04283 262925, 261899, 262922



CLASS ROOM	YEAR OF STUDY	FACILITY AVAILABLE
LECTURE HALL -III	III YEAR B.Sc NURSING	PROJECTOR , MIC,KEYBOARD,CPU,MOUS E AND SPEAKER-4



LECTURE HALL -3

Prof. SHEELAVATHI N, Ph.D

PRINCIPAL

SRI SHANMUGHACOLLEGE OF
NURSING FOR WOMEN

PULLIPALAYAM MORUR.P.O 637 304
SANKAGIRI (TK), SALEM, DT, T.N.



SRI SHANMUGHA COLLEGE OF NURSING FOR WOMEN

Approved by Government of Tamilnadu & TNNMC. Approved by Indian Nursing Council, New Delhi
Affiliated to The Tamilnadu Dr. M.G.R. Medical University, Chennai

Sankari- Tiruchengode Main Road, Pullipalayam, Morur (Po), Sankari(Tk), Salem (dt), Tamilnadu, Pin- 637304

E-mail : principalsrihanmughacon@gmail.com | info@shanmughanursing.edu.in
www.shanmughanursing.edu.in | Phone : 04283 262925, 261899, 262922



LECTURE HALL -3

Smf

Dr. **SHEELAVATHI N, PhD**
PRINCIPAL
SRI SHANMUGHA COLLEGE OF
NURSING FOR WOMEN
PULLIPALAYAM MORUR P.O 637304
SANKAGIRI (TK) SALEM DISTRICT



SRI SHANMUGHA COLLEGE OF NURSING FOR WOMEN

Approved by Government of Tamilnadu & TNNMC. Approved by Indian Nursing Council, New Delhi
Affiliated to The Tamilnadu Dr. M.G.R. Medical University, Chennai

Sankari- Tiruchengode Main Road, Pullipalayam, Morur (Po), Sankari(Tk), Salem (dt), Tamilnadu, Pin- 637304

E-mail : principal@sri Shanmughacon@gmail.com | info@sri Shanmughanursing.edu.in

www.sri Shanmughanursing.edu.in | Phone : 04283 262925, 261899, 262922



CLASS ROOM	YEAR OF STUDY	FACILITY AVAILABLE
LECTURE HALL -IV	IV YEAR B.Sc NURSING	PROJECTOR , MIC,KEYBOARD,CPU, MOUSE AND SPEAKER



LECTURE HALL -4

Smy
Dr. SHEELAVATHI N, Ph.D
PRINCIPAL
SRI SHANMUGHA COLLEGE OF
NURSING FOR WOMEN
PULLIPALAYAM MORUR P.O. 637304
SANKAGIRI (TK), SALEM, Dt., T.N.



SRI SHANMUGHA COLLEGE OF NURSING FOR WOMEN

Approved by Government of Tamilnadu & TNNMC. Approved by Indian Nursing Council, New Delhi
Affiliated to The Tamilnadu Dr. M.G.R Medical University, Chennai

Sankari- Tiruchengode Main Road, Pullipalayam, Morur (Po), Sankari(Tk), Salem (dt), Tamilnadu, Pin- 637304

E-mail : principalsri@shanmughacollegeofnursing.edu.in | info@shanmughacollegeofnursing.edu.in

www.shanmughacollegeofnursing.edu.in | Phone : 04283 262925, 261899, 262922



LECTURE HALL -4

Smy

SHEELAVATHI N, PhD

PRINCIPAL

**SRI SHANMUGHACOLLEGE OF
NURSING FOR WOMEN**

PULLIPALAYAM MORUR P.O 637 304

SANKAGIRI (TK), SALEM, DT., T.N.



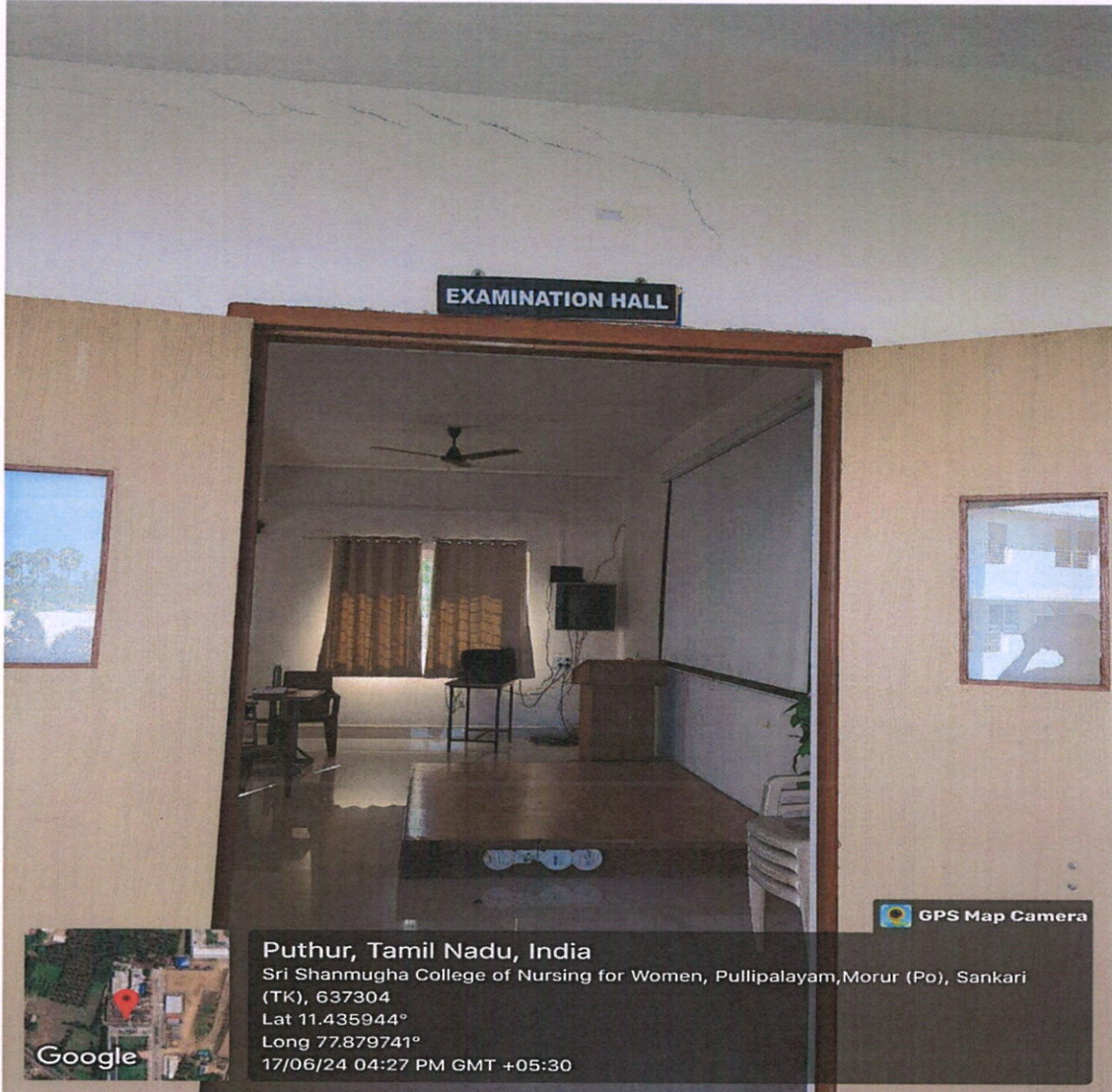
SRI SHANMUGHA COLLEGE OF NURSING FOR WOMEN

Approved by Government of Tamilnadu & TNNMC. Approved by Indian Nursing Council, New Delhi
Affiliated to The Tamilnadu Dr. M.G.R Medical University, Chennai

Sankari- Tiruchengode Main Road, Pullipalayam, Morur (Po), Sankari(Tk), Salem (dt), Tamilnadu, Pin- 637304

E-mail : principalsrihanmughacon@gmail.com | info@shanmughanursing.edu.in

www.shanmughanursing.edu.in | Phone : 04283 262925, 261899, 262922



EXAMINATION HALL

Smmy

Prof. **SHEELAVATHI N., Ph.D**

PRINCIPAL

**SRI SHANMUGHACOLLEGE OF
NURSING FOR WOMEN**

**PULLIPALAYAM MORUR P.O 637304
SANKAGIRI (TK), SALEM, DT, T.N.**



SRI SHANMUGHA COLLEGE OF NURSING FOR WOMEN

Approved by Government of Tamilnadu & TNNMC. Approved by Indian Nursing Council, New Delhi
Affiliated to The Tamilnadu Dr. M.G.R Medical University, Chennai

Sankari- Tiruchengode Main Road, Pullipalayam, Morur (Po), Sankari(Tk), Salem (dt), Tamilnadu, Pin- 637304

E-mail : principalsrihanmughacon@gmail.com | info@shanmughanursing.edu.in

www.shanmughanursing.edu.in | Phone : 04283 262925, 261899, 262922



EXAMINATION HALL

SRI SHANMUGHA COLLEGE OF NURSING FOR WOMEN
PULLIPALAYAM MORUR P.O. 637304
SANKAGIRI (TK) SALEM DT., T.N.



NETWORK RACK

Smey

SHEELAVATHI N, Ph.D
PRINCIPAL
SRI SHANMUGHACOLLEGE OF
NURSING FOR WOMEN
PULLIPALAYAM MORUR P.O 637304
SANKAGIRI (TK), SALEM, DIST. T.N.