



SRI SHANMUGHA COLLEGE OF NURSING FOR WOMEN

Approved by Government of Tamilnadu & TNNMC. Approved by Indian Nursing Council, New Delhi
Affiliated to The Tamilnadu Dr. M.G.R Medical University, Chennai

Sankari- Tiruchengode Main Road, Pullipalayam, Morur (Po), Sankari(Tk), Salem (dt), Tamilnadu, Pin- 637304
E-mail : principalsrihanmughacon@gmail.com | info@shanmughanursing.edu.in
www.shanmughanursing.edu.in | Phone : 04283 262925, 261899, 262922



6.1.2. Effective leadership is reflected in various Institutional practices such as decentralization and participative management.



SRI SHANMUGHA COLLEGE OF NURSING FOR WOMEN

Approved by Government of Tamilnadu & TNNMC, Approved by Indian Nursing Council, New Delhi
Affiliated to The Tamilnadu Dr. M.G.R. Medical University, Chennai

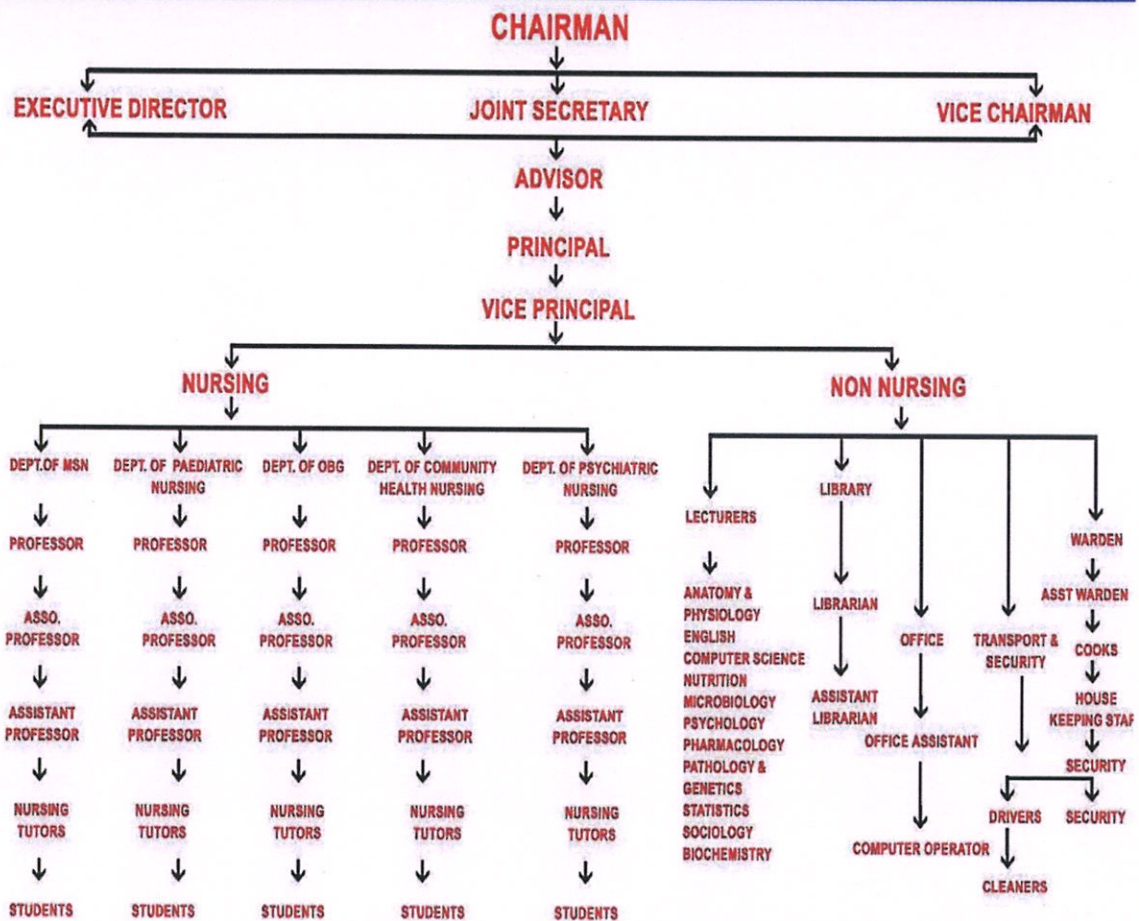
Sankari- Tiruchengode Main Road, Pullipalayam, Morur (Po), Sankari(Tk), Salem (dt), Tamilnadu, Pin- 637304

E-mail : principal@shannmughacollegeofnursing.edu.in | info@shannmughacollegeofnursing.edu.in

www.shannmughacollegeofnursing.edu.in | Phone : 04283 262925, 261899, 262922



SRI SHANMUGHA EDUCATIONAL CHARITABLE TRUST SRI SHANMUGHA COLLEGE OF NURSING FOR WOMEN, MORUR, SANKARI, SALEM ORGANIZATION CHART



Sheela

SHEELAVATHI N, P
PRINCIPAL
SRI SHANMUGHA COLLEGE OF
NURSING FOR WOMEN
PULLIPALAYAM MORUR P.O 637304
SANKARI (TK) SALEM DT