



SRI SHANMUGHA COLLEGE OF NURSING FOR WOMEN

Approved by Government of Tamilnadu & TNNMC, Approved by Indian Nursing Council, New Delhi
Affiliated to The Tamilnadu Dr. M.G.R Medical University, Chennai

Sankari- Tiruchengode Main Road, Pullipalayam, Merur (Po), Sankari(Tk), Salem (dt), Tamilnadu, Pin- 637304
E-mail : principalsri Shanmughacon@gmail.com | info@shanmughanursing.edu.in
www.shanmughanursing.edu.in | Phone : 04283 262925, 261899, 262923



6.2.1 The Institutional has well defined Organisational structure, Statutory Bodies/ committees of the College with relevant rules, norms and guidelines along with Strategic Plan effectively deployed



SRI SHANMUGHA COLLEGE OF NURSING FOR WOMEN

Approved by Government of Tamilnadu & TNNMC, Approved by Indian Nursing Council, New Delhi
Affiliated to The Tamilnadu Dr. M.G.R Medical University, Chennai

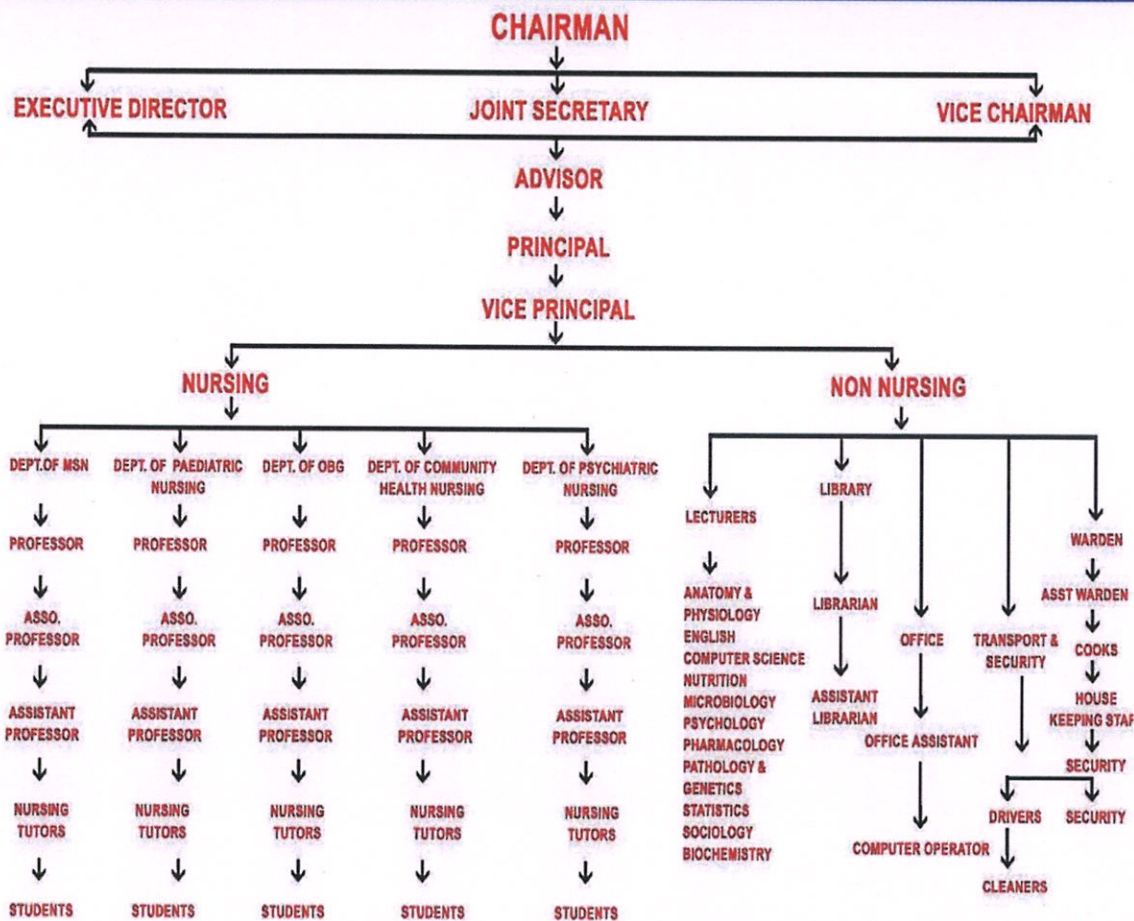
Sankari- Tiruchengode Main Road, Pullipalayam, Morur (Po), Sankari(Tk), Salem (dt), Tamilnadu, Pin- 637304

E-mail : principal@shannmughacollegeofnursing.edu.in | info@shannmughacollegeofnursing.edu.in

www.shannmughacollegeofnursing.edu.in | Phone : 04283 262925, 261899, 262922



SRI SHANMUGHA EDUCATIONAL CHARITABLE TRUST SRI SHANMUGHA COLLEGE OF NURSING FOR WOMEN, MORUR, SANKARI, SALEM ORGANIZATION CHART



Sheela

SHEELAVATHI N, P
PRINCIPAL
SRI SHANMUGHA COLLEGE OF
NURSING FOR WOMEN
PULLIPALAYAM MORUR P.O 637304
SANKARI (TK) SALEM DT