



## **SRI SHANMUGHA COLLEGE OF NURSING FOR WOMEN**

Approved by Government of Tamilnadu & TNNMC, Approved by Indian Nursing Council, New Delhi  
Affiliated to The Tamilnadu Dr. M.G.R Medical University, Chennai

Sankari- Tiruchengode Main Road, Pullipalayam, Morur (Po), Sankari(Tk), Salem (dt), Tamilnadu, Pin- 637304

E-mail : principalsrihanmughacon@gmail.com | info@shanmughanursing.edu.in

www.shanmughanursing.edu.in | Phone : 04283 262925, 261899, 262922



# **ANALYSIS OF ALUMNI FEEDBACK ON CURRICULUM**

**2022-2023**



## SRI SHANMUGHA COLLEGE OF NURSING FOR WOMEN

Approved by Government of Tamilnadu and TNNMC, Approved by Indian Nursing Council, New Delhi.

Affiliated to The Tamilnadu Dr. M.G.R. Medical University, Chennai

(F) Pullipalayam, Morur  
Tk), Salem (Dt) – 637 304

Pullipalayam, Morur

E-

mail : principalsrishanmughacon@gmail.com info@shanmughanursing.edu.in

www.shanmughanursing.edu.in | Phone : 04283 262925, 261899, 262922

### B.SC NURSING 2019-2023

### Alumni Feedback Analysis on Curriculum

#### Statements

Q-1: Learning outcomes were relevant to employment needs

Q-2: Updated with recent/advanced technical skills

Q-3: Gained sufficient confidence in handling clinical cases with the knowledge obtained from the curriculum

Q-4: The curriculum focus on skill development

Q-5: Numerous opportunities were provided to participate and achieve in extracurricular activities

Q-6: All the academic and examination processes were conducted by curriculum

Q-7: Institution is student – centric in all its academic initiatives

Q-8: Various workshops and Hands-on courses conducted by institution were helpful in my clinical area

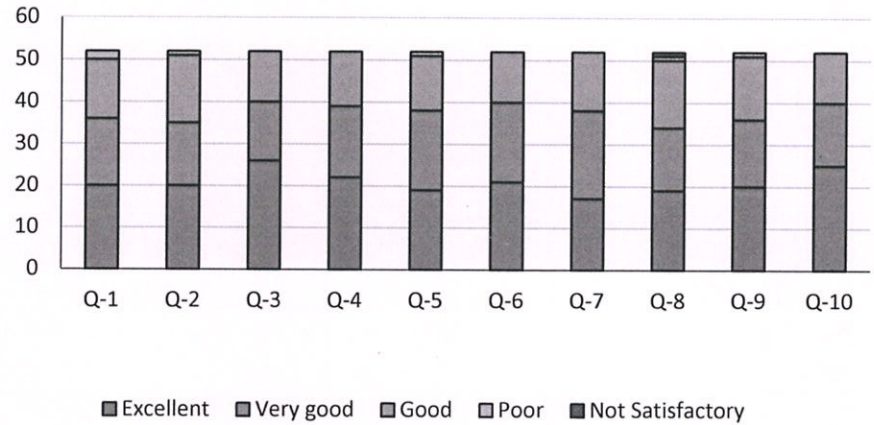
Q-9: Institution provides excellent teaching – learning environment

Q-10: Interested in attending various programs conducted by Sri Shanmugha College Of Nursing for Women as alumni member

Statements/Rating	Excellent	Very good	Good	Poor	Not Satisfactory
Q-1	20	16	14	2	0
Q-2	20	15	16	1	0
Q-3	26	14	12	0	0
Q-4	22	17	13	0	0
Q-5	19	19	13	1	0
Q-6	21	19	12	0	0
Q-7	17	21	14	0	0
Q-8	19	15	16	1	1
Q-9	20	16	15	1	0
Q-10	25	15	12	0	0
<b>% Total</b>	<b>40.19%</b>	<b>32.12%</b>	<b>26.35%</b>	<b>1.15%</b>	<b>0.19%</b>

Prof. SHEELAVATHI N, Ph.D.  
 PRINCIPAL  
 SRI SHANMUGHACOLLEGE OF  
 NURSING FOR WOMEN  
 PULLIPALAYAM, MORUR P.O 637 304  
 SANKAGIRI (TK), SALEM, DT., TN

### Alumni Feedback Analysis on Curriculum 2019-2023



*Smy*  
 Prof. SHEELAVATHI N., Ph.D  
 PRINCIPAL  
 SRISHANMUGHACOLLEGE OF  
 NURSING FOR WOMEN  
 PULLIPALAYAM MORUP 30 63 04  
 SANKAGIRI (TK) SALEM. D. T. N.



## **SRI SHANMUGHA COLLEGE OF NURSING FOR WOMEN**

Approved by Government of Tamilnadu & TNNMC, Approved by Indian Nursing Council, New Delhi  
Affiliated to The Tamilnadu Dr. M.G.R Medical University, Chennai

Sankari- Tiruchengode Main Road, Pullipalayam, Morur (Po), Sankari(Tk), Salem (dt), Tamilnadu, Pin- 637304

E-mail : principalsrihanmughacon@gmail.com | info@shanmughanursing.edu.in

www.shanmughanursing.edu.in | Phone : 04283 262925, 261899, 262922



# **ANALYSIS OF ALUMNI FEEDBACK ON CURRICULUM**

**2021-2022**

## SRI SHANMUGHA COLLEGE OF NURSING FOR WOMEN

Approved by Government of Tamilnadu and TNNMC, Approved by Indian Nursing Council, New Delhi.

Filiated to The Tamilnadu Dr. M.G.R. Medical University, Chennai

Pullipalayam, Morur



(Post), Salem (Dt) – 637 304

mail : principalsrishanmughacon@gmail.com info@shanmughanursing.edu.in

www.shanmughanursing.edu.in | Phone : 04283 262925, 261899, 262922

### B.SC NURSING 2018-2022

### Alumni Feedback Analysis on Curriculum

#### Statements

Q-1: Learning outcomes were relevant to employment needs

Q-2: Updated with recent/advanced technical skills

Q-3: Gained sufficient confidence in handling clinical cases with the knowledge obtained from the curriculum

Q-4: The curriculum focus on skill development

Q-5: Numerous opportunities were provided to participate and achieve in extracurricular activities

Q-6: All the academic and examination processes were conducted by curriculum

Q-7: Institution is student – centric in all its academic initiatives

Q-8: Various workshops and Hands-on courses conducted by institution were helpful in my clinical area

Q-10: Interested in attending various programs conducted by Sri Shanmugha College of Nursing for Women as alumni member

Statements/Rating	Excellent	Very good	Good	Poor	Not Satisfactory
Q-1	4	2	1	0	0
Q-2	3	2	2	0	0
Q-3	3	1	3	0	0
Q-4	5	1	1	0	0
Q-5	5	1	1	0	0
Q-6	4	2	1	0	0
Q-7	5	2	0	0	0
Q-8	4	2	1	0	0
Q-9	4	3	0	0	0
Q-10	5	2	0	0	0

% Total

60.00%

25.71%

14.29%

0.00%

0.00%

*Smy*

Prof. SHEELAVATHI N, Ph.D

PRINCIPAL

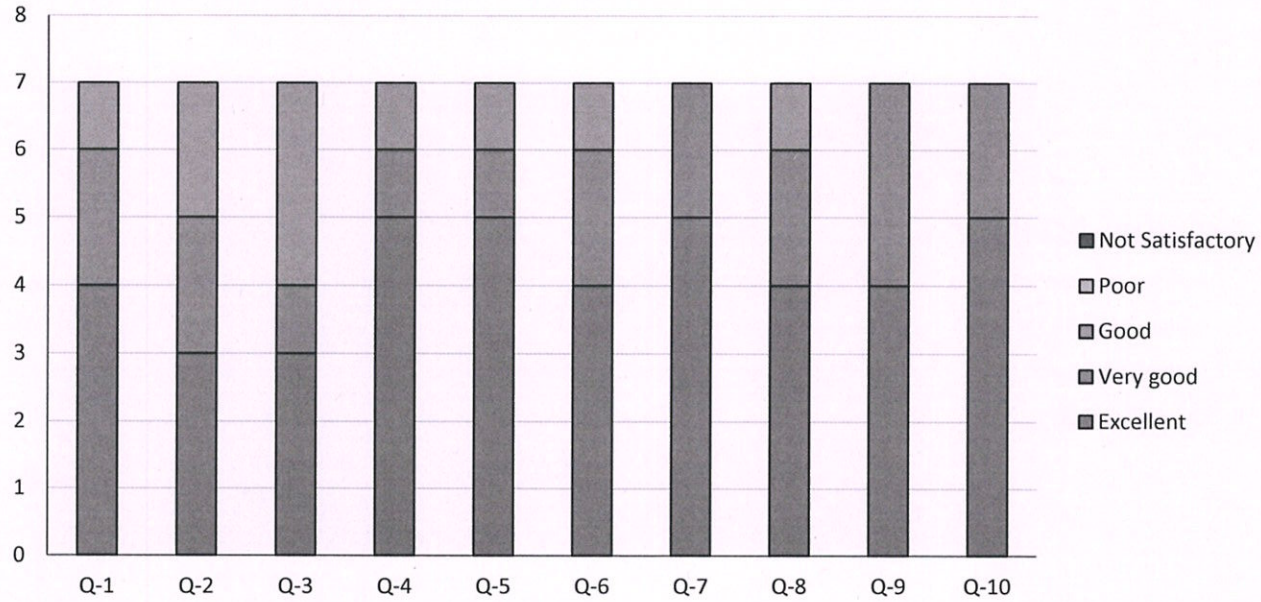
SRI SHANMUGHACOLLEGE OF


NURSING FOR WOMEN

PULLIPALAYAM MORUR P.O 637 304

(SANKAGIRI 'TK) SALEM 'D'

### Alumni Feedback Analysis on Curriculum 2018-2022



  
**Prof. SHEELAVATHI N, Ph.D**  
**PRINCIPAL**  
**SRI SHANMUGHACOLLEGE OF**  
**NURSING FOR WOMEN**  
**PULLIPALAYAM MORUR P.O 637 304**  
**SANKAGIRI (TK) SALEM DISTRICT N.**