



# **SRI SHANMUGHA COLLEGE OF NURSING FOR WOMEN**

Approved by Government of Tamilnadu & TNNMC, Approved by Indian Nursing Council, New Delhi  
Affiliated to The Tamilnadu Dr. M.G.R Medical University, Chennai

Sankari- Tiruchengode Main Road, Pullipalayam, Morur (Po), Sankari(Tk), Salem (dt), Tamilnadu, Pin- 637304  
E-mail: principalsrihanmughacon@gmail.com | info@shanmughanursing.edu.in  
www.shanmughanursing.edu.in | Phone : 04283 262925, 261899, 262922



## **ANALYSIS OF FACULTY FEEDBACK ON CURRICULUM 2022-2023**



## SRI SHANMUGHA COLLEGE OF NURSING FOR WOMEN

Approved by Government of Tamilnadu and TNNMC, Approved by Indian Nursing Council, New Delhi.  
Affiliated to The Tamilnadu Dr. M.G.R. Medical University, Chennai

Pullipalayam,

Morur (Post), Sankari (Tk), Salem (Dt) – 637 304

E-mail : principalsrishanmughacon@gmail.com info@shanmughanursing.edu.in

www.shanmughanursing.edu.in | Phone : 04283 262925, 261899, 262922

### B.SC NURSING 2022-2023

### FACULTY FEEDBACK ANALYSIS ON CURRICULUM

#### Statements

Q-1: The course outcomes/objectives are clearly stated

Q-2: The curriculum include the entire syllabus

Q-3: Curriculum has a balance between practical and theory

Q-4: The curriculum focus on skill development

Q-5: There is adequate weight-age for continuous ongoing assessment

Q-6: The evaluation methods help in identifying slow and advanced learners

Q-7: Digital media and Information Communication Technologies (Laptops ,projectors, online resources etc.) were utilized

Q-8: Curriculum sufficiently facilitate multidisciplinary learning

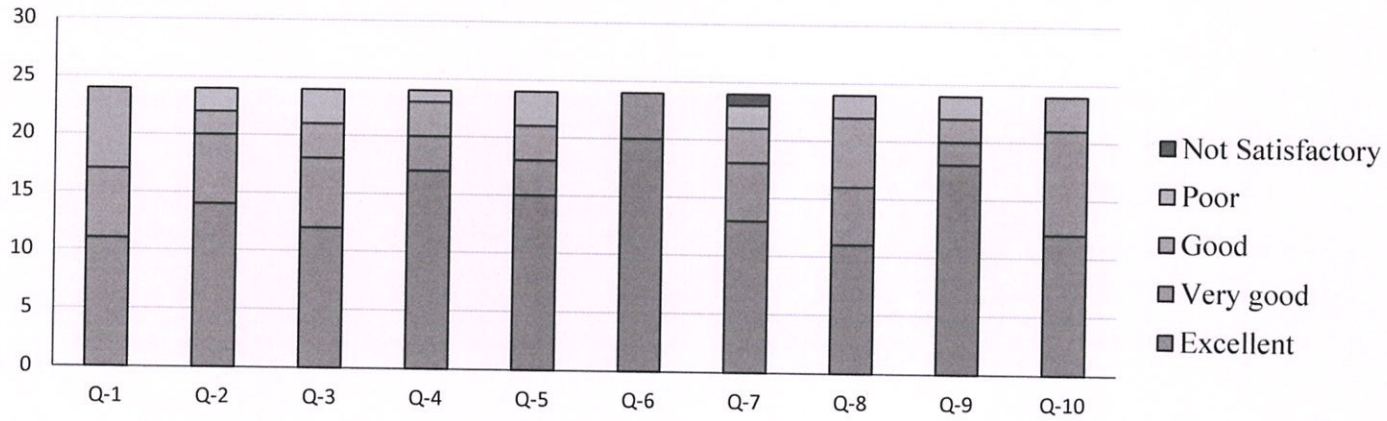
Q-9: Adequate opportunities and freedom to suggest, improve and enrich the curriculum parameters

Q-10: Curriculum focuses on cross cutting issues like Gender sensitivity, Human values and ethics etc.

Statements/Rating	Excellent	Very good	Good	Poor	Not Satisfactory
Q-1	11	6	7	0	0
Q-2	14	6	2	2	0
Q-3	12	6	3	3	0
Q-4	17	3	3	1	0
Q-5	15	3	3	3	0
Q-6	20	4	0	0	0
Q-7	13	5	3	2	1
Q-8	11	5	6	2	0
Q-9	18	2	2	2	0
Q-10	12	9	3	0	0
% Total	59.58%	20.42%	13.33%	6.25%	0.42%

*Sheela*  
Prof. SHEELAVATHI N, PH.D  
PRINCIPAL  
SRI SHANMUGHACOLLEGE OF  
NURSING FOR WOMEN  
PULLIPALAYAM, MORUR P.O 637 304  
SANKAGIRI (TK) SALEM N.

### FACULTY FEEDBACK ANALYSIS ON CURRICULUM 2022-2023



*Sheela*

Prof. SHEELAVATHI

PRINCIPAL

SRI SHANMUGHACOLLEGE OF

NURSING FOR WOMEN

PULLIPALAYAM, MORUR P.O 637 364

SANKAGIRI (TK), SALEM DT / N.



# **SRI SHANMUGHA COLLEGE OF NURSING FOR WOMEN**

Approved by Government of Tamilnadu & TNNMC, Approved by Indian Nursing Council, New Delhi  
Affiliated to The Tamilnadu Dr. M.G.R Medical University, Chennai

Sankari- Tiruchengode Main Road, Pullipalayam, Morur (Po), Sankari(Tk), Salem (dt), Tamilnadu, Pin- 637304  
E-mail : principalsrihanmughacon@gmail.com | info@shanmughanursing.edu.in  
www.shanmughanursing.edu.in | Phone : 04283 262925, 261899, 262922



## **ANALYSIS OF FACULTY FEEDBACK ON CURRICULUM**

**2021-2022**



## SRI SHANMUGHA COLLEGE OF NURSING FOR WOMEN

Approved by Government of Tamilnadu and TNNMC, Approved by Indian Nursing Council, New Delhi.  
Affiliated to The Tamilnadu Dr. M.G.R. Medical University, Chennai

Pullipalayam,

Morur (Post), Sankari (Tk), Salem (Dt) – 637 304

E-mail : principalsrishanmughacon@gmail.com info@shanmughanursing.edu.in

www.shanmughanursing.edu.in | Phone : 04283 262925, 261899, 262922

### B.SC NURSING 2021-2022

### FACULTY FEEDBACK ANALYSIS ON CURRICULUM

#### Statements

Q-1: The course outcomes/objectives are clearly stated

Q-2: The curriculum include the entire syllabus

Q-3: Curriculum has a balance between practical and theory

Q-4: The curriculum focus on skill development

Q-5: There is adequate weight-age for continuous ongoing assessment

Q-6: The evaluation methods help in identifying slow and advanced learners

Q-7: Digital media and Information Communication Technologies (Laptops ,projectors, online resources etc.) were utilized

Q-8: Curriculum sufficiently facilitate multidisciplinary learning

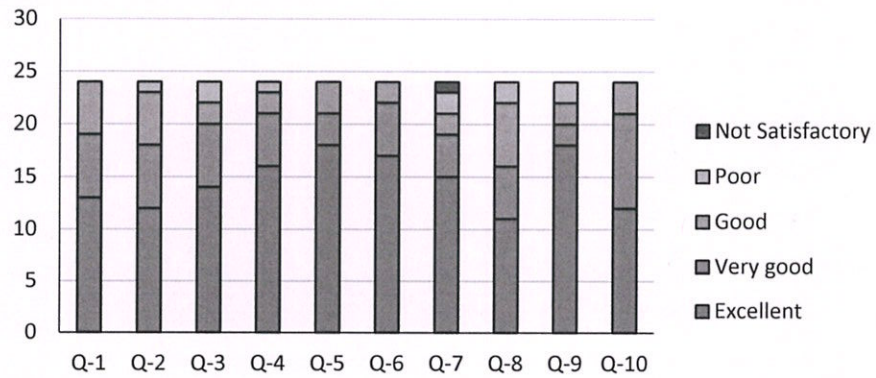
Q-9: Adequate opportunities and freedom to suggest, improve and enrich the curriculum parameters


Q-10: Curriculum focuses on cross cutting issues like Gender sensitivity, Human values and ethics etc.

Statements/Rating	Excellent	Very good	Good	Poor	Not Satisfactory
Q-1	13	6	5	0	0
Q-2	12	6	5	1	0
Q-3	14	6	2	2	0
Q-4	16	5	2	1	0
Q-5	18	3	3	0	0
Q-6	17	5	2	0	0
Q-7	15	4	2	2	1
Q-8	11	5	6	2	0
Q-9	18	2	2	2	0
Q-10	12	9	3	0	0
% Total	60.83%	21.25%	13.33%	4.17%	0.42%

*Copy*  
Prof. SHEELAVATHI N, Ph.D  
PRINCIPAL  
SRI SHANMUGHACOLLEGE OF  
NURSING FOR WOMEN  
PULLIPALAYAM MORUR P.O. 637 304  
SALAM (DT) TAMILNADU

### FACULTY FEEDBACK ANALYSIS ON CURRICULUM 2021-2022



  
 Prof. SHEELAVATHI N., Ph.D.  
 PRINCIPAL  
 SRI SHANMUGHACOLLEGE OF  
 NURSING FOR WOMEN  
 PULLIPALAYAM, MORUR P.O. 637 304  
 SANKAGIRI (TK), SALEM, DT., T.N.



## **SRI SHANMUGHA COLLEGE OF NURSING FOR WOMEN**

Approved by Government of Tamilnadu & TNNMC. Approved by Indian Nursing Council, New Delhi  
Affiliated to The Tamilnadu Dr. M.G.R Medical University, Chennai

Sankari- Tiruchengode Main Road, Pullipalayam, Morur (Po), Sankari(Tk), Salem (dt), Tamilnadu, Pin- 637304

E-mail : [principalsrihanmughacon@gmail.com](mailto:principalsrihanmughacon@gmail.com) | [info@shanmughanursing.edu.in](mailto:info@shanmughanursing.edu.in)

[www.shanmughanursing.edu.in](http://www.shanmughanursing.edu.in) | Phone : 04283 262925, 261899, 262922



# **ANALYSIS OF FACULTY FEEDBACK ON CURRICULUM**

**2020-2021**



## SRI SHANMUGHA COLLEGE OF NURSING FOR WOMEN

Approved by Government of Tamilnadu and TNNMC, Approved by Indian Nursing Council, New Delhi.

Affiliated to The Tamilnadu Dr. M.G.R . Medical University, Chennai

Morur (Post), Sankari (Tk), Salem (Dt) – 637 304

E-mail : principalsrishanmughacon@gmail.com      info@shanmughanursing.edu.in

www.shanmughanursing.edu.in |      Phone : 04283 262925, 261899, 262922

Pullipalayam,

### B.SC NURSING 2020-2021

### FACULTY FEEDBACK ANALYSIS ON CURRICULUM

#### Statements

Q-1: The course outcomes/objectives are clearly stated

Q-2: The curriculum include the entire syllabus

Q-3: Curriculum has a balance between practical and theory

Q-4: The curriculum focus on skill development

Q-5: There is adequate weight-age for continuous ongoing assessment

Q-6: The evaluation methods help in identifying slow and advanced learners

Q-7: Digital media and Information Communication Technologies (Laptops ,projectors, online resources etc.) were utilized

Q-8: Curriculum sufficiently facilitate multidisciplinary learning

Q-9: Adequate opportunities and freedom to suggest, improve and enrich the curriculum parameters

Q-10: Curriculum focuses on cross cutting issues like Gender sensitivity, Human values and ethics etc.

Statements/Rating	Excellent	Very good	Good	Poor	Not Satisfactory
Q-1	11	6	7	0	0
Q-2	14	6	2	2	0
Q-3	12	6	3	3	0
Q-4	17	3	3	1	0
Q-5	15	3	3	3	0
Q-6	20	4	0	0	0
Q-7	13	5	3	2	1
Q-8	11	5	6	2	0
Q-9	18	2	2	2	0
Q-10	12	9	3	0	0

% Total

59.58%

20.42%

13.33%

6.25%

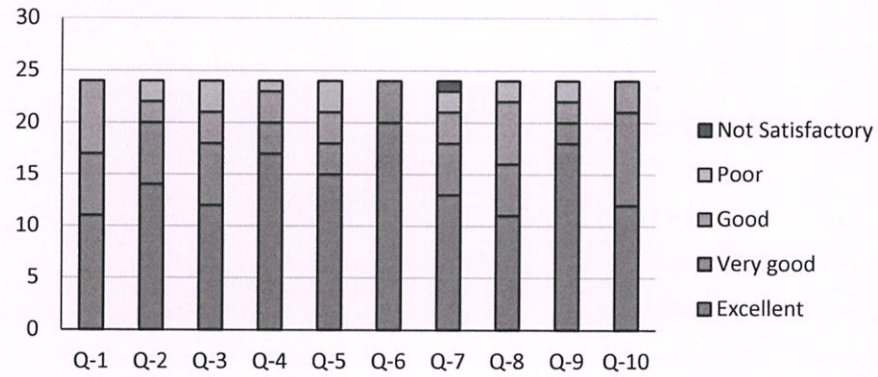
0.42%


Smf

Prof. SHEELAVATHI N, Ph.D  
PRINCIPAL  
SRI SHANMUGHACOLLEGE OF  
NURSING FOR WOMEN  
PULLIPALAYAM MORUR.P.O 637304  
SALLEM DT. T.N.



### FACULTY FEEDBACK ANALYSIS ON CURRICULUM 2020-2021



  
 Prof. SHEELAVATHI N, PhD  
 PRINCIPAL  
 SRI SHANMUGHACOLLEGE OF  
 NURSING FOR WOMEN  
 MULIPALAYAM MORUR P.O. 631 04  
 SANKAGIRI (TK) SALEM D.



## **SRI SHANMUGHA COLLEGE OF NURSING FOR WOMEN**

Approved by Government of Tamilnadu & TNNMC, Approved by Indian Nursing Council, New Delhi  
Affiliated to The Tamilnadu Dr. M.G.R Medical University, Chennai

Sankari- Tiruchengode Main Road, Pullipalayam, Morur (Po), Sankari(Tk), Salem (dt), Tamilnadu, Pin- 637304  
E-mail : principalsrihanmughacon@gmail.com | info@shanmughanursing.edu.in  
www.shanmughanursing.edu.in | Phone : 04283 262925, 261899, 262922



# **ANALYSIS OF FACULTY FEEDBACK ON CURRICULUM**

**2019-2020**



## SRI SHANMUGHA COLLEGE OF NURSING FOR WOMEN

Approved by Government of Tamilnadu and TNNMC, Approved by Indian Nursing Council, New Delhi.

Affiliated to The Tamilnadu Dr. M.G.R. Medical University, Chennai

Morur (Post), Sankari (Tk), Salem (Dt) – 637 304

E-mail : principalsrishanmughacon@gmail.com info@shanmughanursing.edu.in

www.shanmughanursing.edu.in | Phone : 04283 262925, 261899, 262922

Pullipalayam,

### B.SC NURSING 2019-2020

### FACULTY FEEDBACK ANALYSIS ON CURRICULUM

#### Statements

Q-1: The course outcomes/objectives are clearly stated

Q-2: The curriculum include the entire syllabus

Q-3: Curriculum has a balance between practical and theory

Q-4: The curriculum focus on skill development

Q-5: There is adequate weight-age for continuous ongoing assessment

Q-6: The evaluation methods help in identifying slow and advanced learners

Q-7: Digital media and Information Communication Technologies (Laptops ,projectors, online resources etc.) were utilized

Q-8: Curriculum sufficiently facilitate multidisciplinary learning

Q-9: Adequate opportunities and freedom to suggest, improve and enrich the curriculum parameters

Q-10: Curriculum focuses on cross cutting issues like Gender sensitivity, Human values and ethics etc.

Statements/Rating	Excellent	Very good	Good	Poor	Not Satisfactory
Q-1	8	2	2	0	0
Q-2	6	2	4	0	0
Q-3	7	3	2	0	0
Q-4	4	4	3	1	0
Q-5	5	3	2	2	0
Q-6	6	3	2	1	0
Q-7	4	3	3	2	0
Q-8	6	3	3	0	0
Q-9	7	4	1	0	0
Q-10	6	4	2	0	0
% Total	49.17%	25.83%	20.00%	5.00%	0.00%

Prof. SHEELAVATHI N. P.

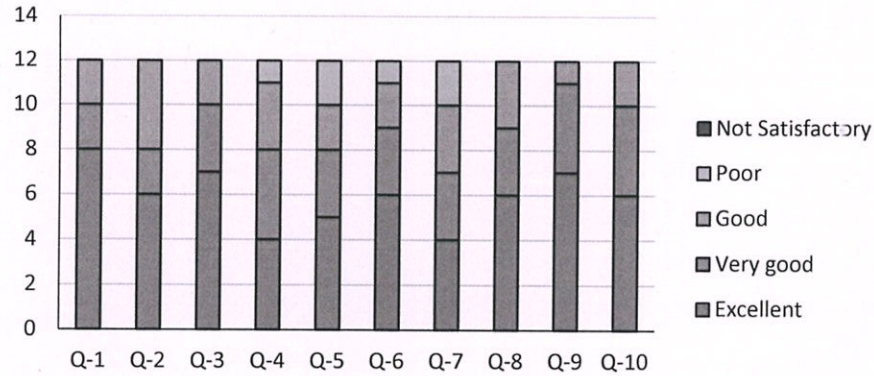
PRINCIPAL

SRI SHANMUGHACOLLEGE OF  
NURSING FOR WOMEN

PULLIPALAYAM MORUR P.O. 637 304

SANKAGIRI (TK), SALEM, DT., TAMIL NADU

FACULTY FEEDBACK ANALYSIS ON CURRICULUM  
2019-2020



*Smj*  
 Prof. SHEELAVATHI N, PhD  
 PRINCIPAL  
 SRI SHANMUGHACOLLEGE OF  
 NURSING FOR WOMEN  
 PULLIPALAYAM MORUR P.O. 631004  
 SANKAGIRI (TK) SALEM DISTRICT, T.N.



## **SRI SHANMUGHA COLLEGE OF NURSING FOR WOMEN**

Approved by Government of Tamilnadu & TNNMC. Approved by Indian Nursing Council, New Delhi  
Affiliated to The Tamilnadu Dr. M.G.R Medical University, Chennai

Sankari- Tiruchengode Main Road, Pullipalayam, Morur (Po), Sankari(Tk), Salem (dt), Tamilnadu, Pin- 637304

E-mail : [principalsrihanmughacon@gmail.com](mailto:principalsrihanmughacon@gmail.com) | [info@shanmughanursing.edu.in](mailto:info@shanmughanursing.edu.in)

[www.shanmughanursing.edu.in](http://www.shanmughanursing.edu.in) | Phone : 04283 262925, 261899, 262922



# **ANALYSIS OF FACULTY FEEDBACK ON CURRICULUM**

**2018-2019**



## SRI SHANMUGHA COLLEGE OF NURSING FOR WOMEN

Approved by Government of Tamilnadu and TNNMC, Approved by Indian Nursing Council, New Delhi.

Affiliated to The Tamilnadu Dr. M.G.R. Medical University, Chennai

Pullipalayam,

Morur (Post), Sankari (Tk), Salem (Dt) – 637 304

E-mail : [principalsrihanmughacon@gmail.com](mailto:principalsrihanmughacon@gmail.com) [info@shanmughanursing.edu.in](mailto:info@shanmughanursing.edu.in)

[www.shanmughanursing.edu.in](http://www.shanmughanursing.edu.in) | Phone : 04283 262925, 261899, 262922

### B.SC NURSING 2018-2019

### FACULTY FEEDBACK ANALYSIS ON CURRICULUM

#### Statements

Q-1: The course outcomes/objectives are clearly stated

Q-2: The curriculum include the entire syllabus

Q-3: Curriculum has a balance between practical and theory

Q-4: The curriculum focus on skill development

Q-5: There is adequate weight-age for continuous ongoing assessment

Q-6: The evaluation methods help in identifying slow and advanced learners

Q-7: Digital media and Information Communication Technologies (Laptops ,projectors, online resources etc.) were utilized

Q-8: Curriculum sufficiently facilitate multidisciplinary learning

Q-9: Adequate opportunities and freedom to suggest, improve and enrich the curriculum parameters

Q-10: Curriculum focuses on cross cutting issues like Gender sensitivity, Human values and ethics etc.

Statements/Rating	Excellent	Very good	Good	Poor	Not Satisfactory
Q-1	4	2	0	0	0
Q-2	5	1	0	0	0
Q-3	3	2	1	0	0
Q-4	3	3	0	0	0
Q-5	3	2	1	0	0
Q-6	4	2	0	0	0
Q-7	3	2	1	0	0
Q-8	2	3	1	0	0
Q-9	2	2	1	1	0
Q-10	3	2	1	0	0
% Total	53.33%	35.00%	10.00%	1.67%	0.00%

Prof. SHEELAVATHI N. Ph.D

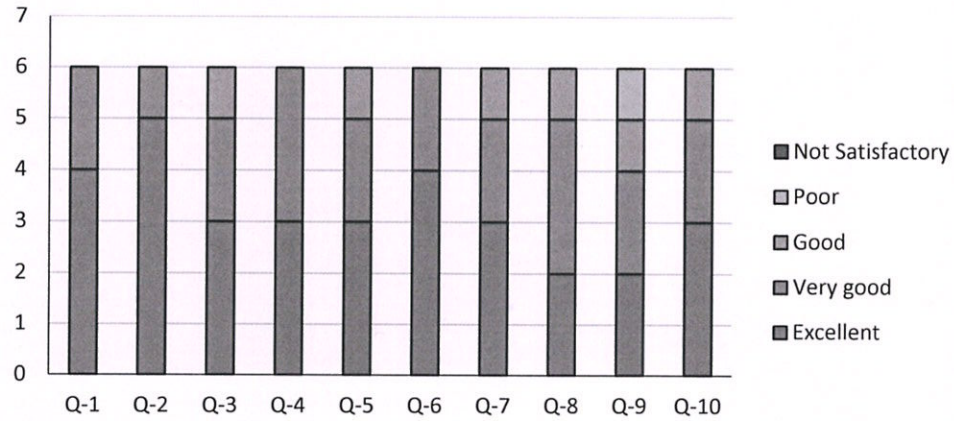
PRINCIPAL

SRI SHANMUGHACOLLEGE OF  
NURSING FOR WOMEN

PULLIPALAYAM MORUR (P) 637 304

SANKAGIRI (TK), SALEM, TAMIL NADU

### FACULTY FEEDBACK ANALYSIS ON CURRICULUM 2018-2019



*Smy*  
 Prof. SHEELAVATHI N, PhD  
 PRINCIPAL  
 SRI SHANMUGHACOLLEGE OF  
 NURSING FOR WOMEN  
 PULLIPALAYAM MORUR P.O 637 304  
 SANKAGIRI (TK), SALEM, D.T., T.N.