



## SRI SHANMUGHA COLLEGE OF NURSING FOR WOMEN

Approved by Government of Tamilnadu & TNNMC, Approved by Indian Nursing Council, New Delhi  
Affiliated to The Tamilnadu Dr. M.G.R Medical University, Chennai

Sankari- Tiruchengode Main Road, Pullipalayam, Morur (Po), Sankari(Tk), Salem (dt), Tamilnadu, Pin- 637304

E-mail : [principalsrihanmughacon@gmail.com](mailto:principalsrihanmughacon@gmail.com) | [info@shanmughanursing.edu.in](mailto:info@shanmughanursing.edu.in)

[www.shanmughanursing.edu.in](http://www.shanmughanursing.edu.in) | Phone : 04283 262925, 261899, 262922



# ANALYSIS OF PROFESSIONALS FEED BACK ON CURRICULUM



## SRI SHANMUGHA COLLEGE OF NURSING FOR WOMEN

Approved by Government of Tamilnadu and TNNMC, Approved by Indian Nursing Council, New Delhi.

Affiliated to The Tamilnadu Dr. M.G.R. Medical University, Chennai

Pullipalayam, Morur (Post), Sankari (Tk), Salem (Dt) – 637 304

E-mail : principalsrishanmughacon@gmail.com info@shanmughanursing.edu.in

www.shanmughanursing.edu.in | Phone : 04283 262925, 261899, 262922

2022 -2023

### FEEDBACK ON CURRICULUM BY PROFESSIONALS

#### Statements

Q-1: Practice involvement in patient care as a health care member

Q-2: Demonstrates communication and interpersonal skills

Q-3: Exhibit knowledge on subject matter

Q-4: Keep up professional values in their nursing practice

Q-5: Practice leadership and critical thinking as needed

Q-6: Shows respectful attitude towards the fellow professionals

Q-7: Demonstrates approach ability in need

Q-8: Practice assertiveness in handling situations

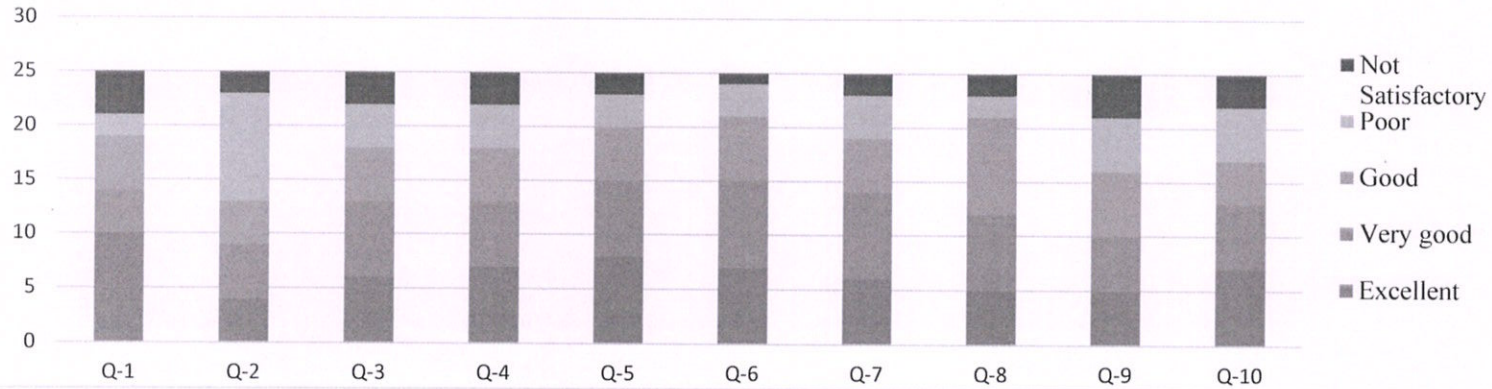
Q-9: Demonstrates self-control


Q-10: Open to feedback and uses it for their improvement

Statements/ Rating	Excellent	Very good	Good	Poor	Not Satisfactory
Q-1	10	4	5	2	4
Q-2	4	5	4	10	2
Q-3	6	7	5	4	3
Q-4	7	6	5	4	3
Q-5	8	7	5	3	2
Q-6	7	8	6	3	1
Q-7	6	8	5	4	2
Q-8	5	7	9	2	2
Q-9	5	5	6	5	4
Q-10	7	6	4	5	3

*Sheela*  
Prof. SHEELAVATHI N.  
PRINCIPAL  
SRI SHANMUGHACOLLEGE OF  
NURSING FOR WOMEN  
PULLIPALAYAM, MORUR P.O 637 304  
SANKAGIRI (TK) SALEM D. N.

## FEEDBACK ANALYSIS FROM PROFESSIONALS FOR 2022 -2023



  
 Prof. SHEELAVATHI N.  
 PRINCIPAL  
 SRI SHANMUGHACOLLEGE OF  
 NURSING FOR WOMEN  
 PULLIPALAYAM, MORUR.P.O 637 20  
 SANKAGIRI (TK) SALEM DT . IN